

OIRA Reporting Resources for CUNYFirst

1

OIRA hosts a range of reporting resources

2

Status	Resource	Description
Stays the same	OIRA Websites	Easily accessible reports for the public and University users
	Institutional Research Database (IRDB)	Data warehouse of fixed, frozen extracts of enrollment, student characteristics, course characteristics, application data, financial aid data optimized for reporting
New	CUNY Business Intelligence Light (CBIL)	Daily-refreshed enrollment and course data for <u>CUNYFirst schools</u> to facilitate Flash reports, daily enrollment tracking

OIRA Public Website

3

- <http://www.cuny.edu/about/administration/offices/ira/ir.html>
- Official reports of census data and outcomes for all colleges: retention, graduation, degrees, student profiles
- Key reports updated annually or by term
- Publicly available



The screenshot displays the official website of the Office of Institutional Research & Assessment (OIRA) at CUNY. The header features the CUNY logo and navigation links such as 'Find It', 'College Websites', 'Text Version', and 'Make This Website Talk'. A secondary navigation bar includes links for 'Future Students', 'Current Students', 'Faculty/Staff', and 'Alumni'. The main content area is titled 'Office of Institutional Research' and includes a sidebar with links to 'About Us', 'Student Data Book (Current & Historical)', 'Reports', 'Surveys', 'Additional Data', 'Documentation and Training Materials', and 'OIRA Login'. The main body contains a graphic of a city skyline with a line graph overlay, followed by a description of the office's mission. Below this, there are two columns of links: 'CURRENT STUDENT DATA BOOK BY SUBJECT' (including Academic Program Reports, Accountability, Admissions, Degrees Granted, Enrollment, Race/Ethnicity, Retention & Graduation, SEEK/College Discovery, STEM Enrollment & Degrees Granted, and Student Profile / Demographic Information) and 'Higher Education Opportunity Act (HEOA) CUNY Disclosures' (including HEOA Diversity Reports, HEOA Retention Rate Reports, HEOA Graduation Rate Reports, and HEOA Transfer Rate Reports). A contact information box is also present in the sidebar.

CUNY The City University of New York

Find It College Websites Text Version Make This Website Talk

Future Students Current Students Faculty/Staff Alumni

ABOUT ACADEMICS ADMISSIONS FINANCIAL AID RESEARCH NEWS/EVENTS LIBRARIES EMPLOYMENT SEARCH LOG-IN

Welcome >> About >> Administration >> Administrative Offices >> Institutional Research & Assessment >> **Office of Institutional Research**

Office of Institutional Research

About Us
Student Data Book (Current & Historical)
Reports
Surveys
Additional Data
Documentation and Training Materials
OIRA Login

Contact Us
555 West 57th Street - Suite 1240
New York, New York 10019
Tel: 212-541-0372
Fax: 212-541-0392
[Staff Directory >>](#)

The Office of Institutional Research conducts a wide variety of quantitative analysis to guide policy and evaluate academic programs and administrative processes at CUNY. The office collects, manages and organizes data to support the analytic and reporting needs of the University including mandatory federal, state and city reports, ad-hoc requests, grant applications and major projects, such as enrollment management. >>

CURRENT STUDENT DATA BOOK BY SUBJECT

- Academic Program Reports
- Accountability
- Admissions (New Students)
- Degrees Granted
- Enrollment
- Race/Ethnicity
- Retention & Graduation
- SEEK/College Discovery
- STEM Enrollment & Degrees Granted
- Student Profile / Demographic Information

Higher Education Opportunity Act (HEOA) CUNY Disclosures
The Higher Education Opportunity Act (HEOA) (PL 110-315)

- HEOA Diversity Reports
- HEOA Retention Rate Reports
- HEOA Graduation Rate Reports
- HEOA Transfer Rate Reports

OIRA Password-Protected Website

4

- Detailed official enrollment reports
- Interactive drill-down reports of applicants, admits, and enrollees by demographic characteristics and academic indicators
- Passwords available to CUNY staff by request

Enrollment Management Reports

Reports On Enrollment Management Topics

[Presentation: Changes in Undergraduate Student Profile: Implications for New Student Orientation \(3-13-12\)](#)

[Enrollment by Credits Attempted \(2-14-12\)](#)

[Trends in First-time Freshman Characteristics by College \(added 11-22-11\)](#)

[Trends in Baccalaureate Enrollment and Degrees Granted by Major](#)

[Trends in Master's Degree Enrollment and Degrees Granted by Major](#)

[Trends in Advanced Certificate Enrollment and Degrees Granted by Major](#)

[Applications, Admissions, and Enrollment by Phase and College](#)

Applications, Admissions, and Enrollment: Drill-Down Reports

**Fall 2011 data for Kingsborough and LaGuardia are preliminary*

[ENMG 0001 Applications, Admission and Enrollment, by College and Choice](#)

[ENMG 0002 Applications, Admission and Enrollment by College, Race/Ethnicity, Gender and High School](#)

[ENMG 0003 Applications, Admission and Enrollment by College, SAT Score Band and High School](#)

[ENMG 0004 Applications, Admission and Enrollment, by College, Region, County/Borough and High School](#)

[ENMG 0005 Applications, Admission and Enrollment, by College, Region, County/Borough, High School and SAT Score Band](#)

[ENMG 0006 Applications, Admission and Enrollment by College, SAT Score Band, Race/Ethnicity, Borough/County and High School](#)

Institutional Research Database (IRDB)

5

- Official fixed, frozen repository of University-wide historical enrollments and ancillary data
 - New data added every term after census date
- Available to college IR offices and Central Office researchers
- Optimized for reporting
 - Trends in enrollment by college, term, degree, major
 - Tracking freshman cohorts for retention and graduation
 - Supports “canned” official reports and *ad hoc* queries
 - Data are very robust, but complex

CUNY Business Intelligence Lite (CBIL)

6

- Enrollment and course data to facilitate
 - “Flash” reporting
 - Daily enrollment tracking
 - Course availability analyses
- Refreshed daily (around noon) from Administrative Data Warehouse (ADW), 1-day lag on transactional data
- Only available for schools on CUNYFirst
- Available automatically to college IR offices at schools on CF (same end-user layer as IRDB)
 - Registrars and Enrollment Managers may request access through campus IR offices

Getting Access to CBIL

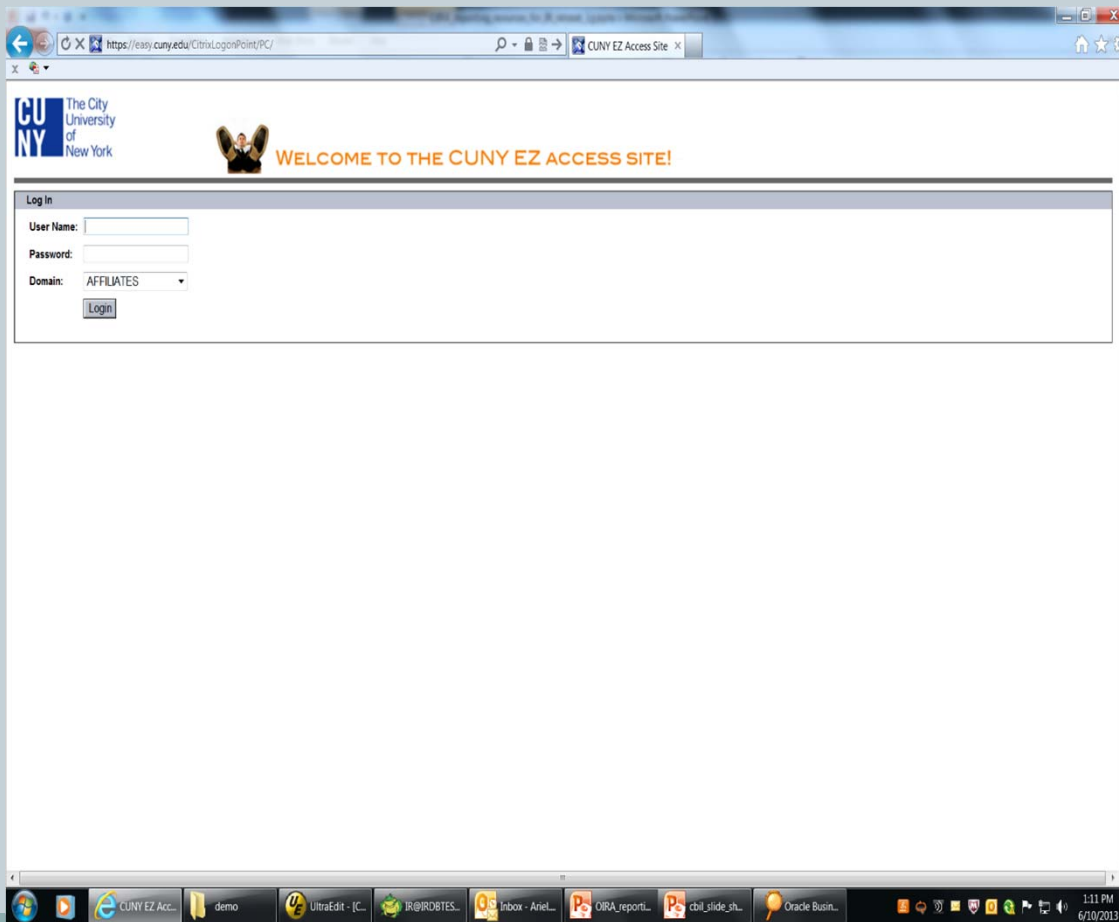
7

- College IR offices are the first lines of support for new campus users to access and learn to use CBIL
- Access requires
 1. A Citrix account provided by CUNY CIS (submit service desk ticket)
 2. A Citrix web plug-in installed by campus IT
 3. A CBIL account provided by OIRA
 - ✦ Registrars can request a CBIL account through IR Directors
 - ✦ Directors send requests to Mai Lam (Mai.Lam@cuny.edu)
 - Name, Title, Department, Email Address, Telephone number
- Accounts for staff at CF wave 4 schools can be created between crossover and beginning of fall 2014 registration
- CBIL passwords can be retrieved/reset by calling Albert Moy (OIRA DBA) at 212.541.1007 (not CUNY CIS)

Begin by logging on to Citrix

8

<https://easy.cuny.edu/CitrixLogonPoint/PC/>

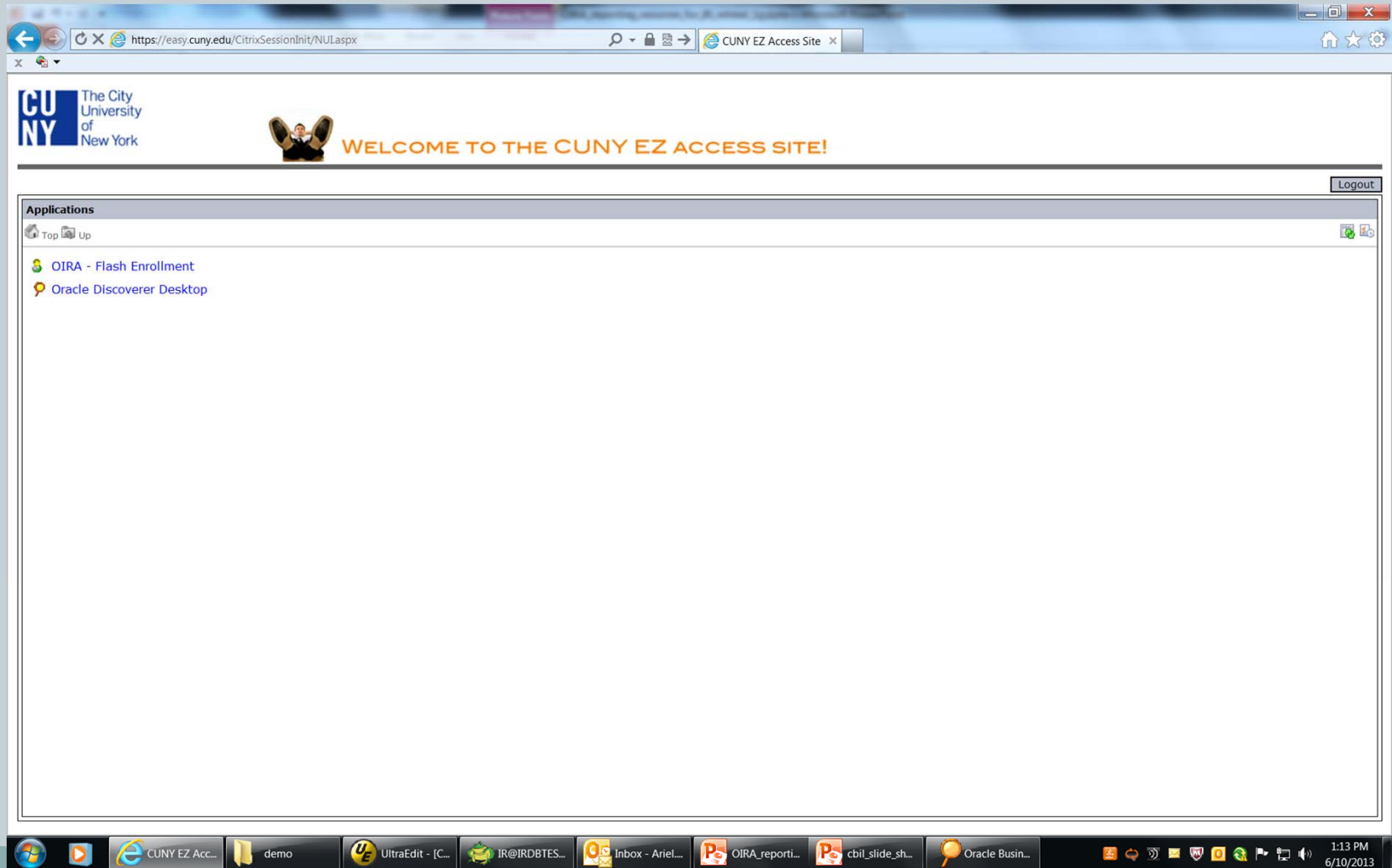


Requires:

- A Citrix account:
- *Provided by CIS*
- Web plug-in
- *Installed by campus IT*

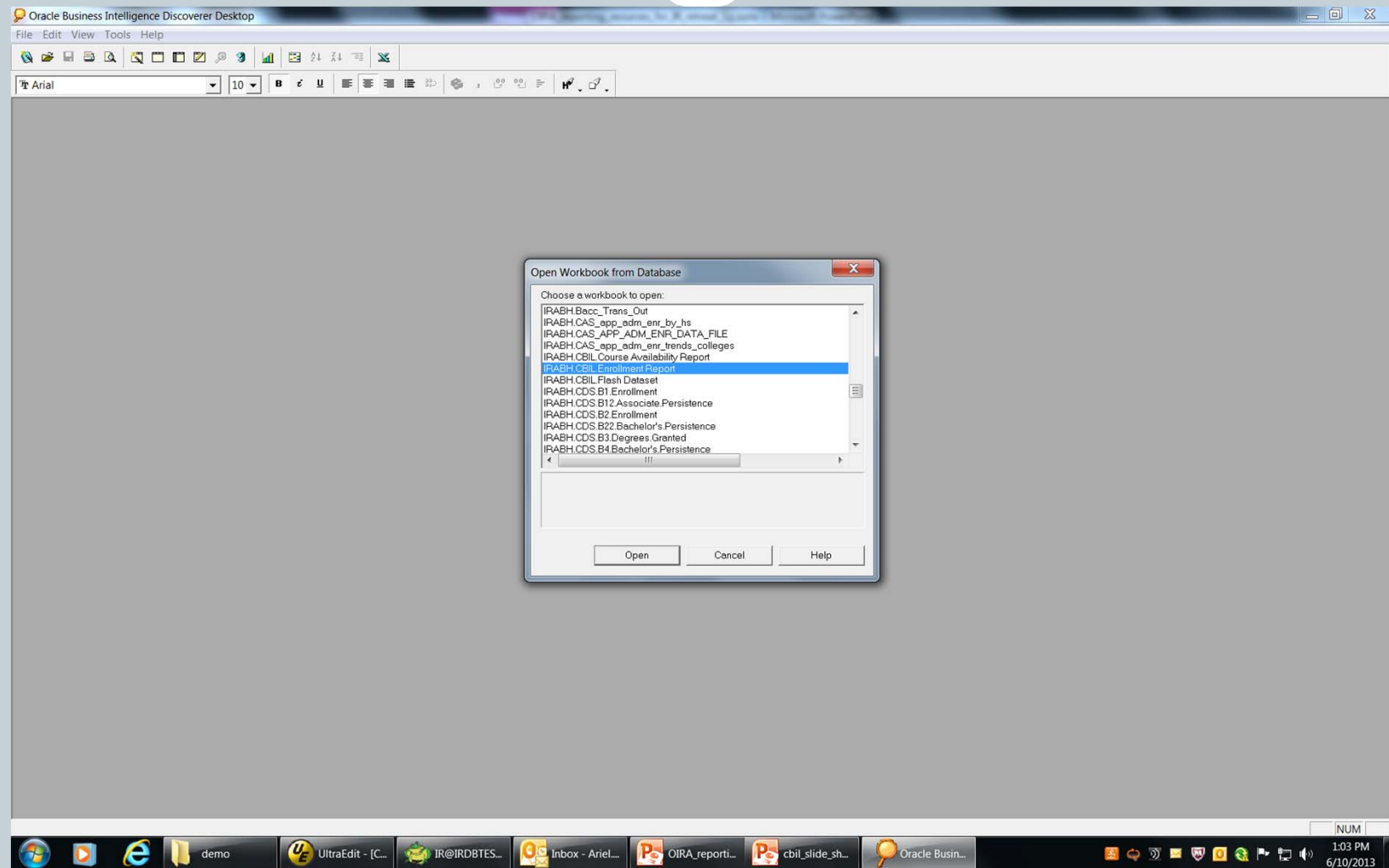
Launch Oracle Discoverer Desktop

9



Open a Workbook from the Database

10



Launch Flash Dataset

11

CBIL FLASH DATASET

New Undergraduate Students

Page Items: : CF Institution: HTR01 : IR Run Date: 03-DEC-2013 : IR College Name: Hunter : IR Semester Enrolled: Fall : IR Year Enrolled: 2013

				:	IR Headcount
:	IR New Student Description	IR SEEK/CD	IR Full-time/Part-time		
1	First-time Freshmen	Regular	FULL-TIME		1,847
			PART-TIME		55
		Special	FULL-TIME		91
		NEW STUDENT SUBTOTAL			
2	Advanced Standing Transfers	Regular	FULL-TIME		1,247
			PART-TIME		601
		Special	FULL-TIME		35
			PART-TIME		2
NEW STUDENT SUBTOTAL				1,885	

◀ ▶ New Undergraduate Students Undergraduate Enrollment New Graduate Students Graduate (Non-Doctoral) Enrollment Doctoral Enrollment

Launch CBIL Enrollment Report

12

CBIL FLASH DATASET Undergraduate Enrollment

Page Items: CF Institution: <All> ▾ IR Run Date: 20-FEB-2013 ▾ IR College Name: <All> ▾ IR Semester Enrolled: Spring ▾

				:	IR Headcount	CF Units Progress Sum	
IR Class Level	IR Degree Status	Category	IR Full-time/Part-tim	:			
UNDERGRADUATE	DEGREE	Regular	full-time		47,462	681,521.0	
			part-time		29,490	207,965.5	
		SEEK/CD	full-time		2,553	36,513.5	
			part-time		393	2,966.5	
		DEGREE STATUS SUBTOTAL				79,898	928,966.5
	NONDEGREE	High School Student	full-time		78	1,076.0	
			part-time		3,525	13,867.5	
		Other	full-time		144	1,972.0	
			part-time		1,526	9,090.5	
		DEGREE STATUS SUBTOTAL				5,273	26,006.0
	Undergraduate Total					85,171	954,972.5

Launch Course Availability Report

13

CUNY Business Intelligence Lite Course Availability by College

Page Items: : IR Semester: Fall : IR Year: 2013 : IR Run Date: 11-NOV-2013

	Number of Courses	Number of Sections	Number of Seats Allocated	Number of Seats Occupied	Total Progress Units	Number of Seats Available	Percentage of Seats Available
: IR College Nar							
BMCC	461	3,827	106,750	88,189	308,680.0	18,561	17.4%
Bronx	374	2,097	52,137	44,152	145,575.0	7,985	15.3%
Brooklyn	1,605	3,144	275,717	60,282	183,697.5	215,435	78.1%
Guttman	35	184	5,473	2,706	14,400.0	2,767	50.6%
Hostos	288	1,152	142,086	25,770	87,193.0	116,316	81.9%
Hunter	2,368	5,067	135,546	90,135	281,231.5	45,411	33.5%
Kingsborough	550	3,315	96,898	69,404	215,859.0	27,494	28.4%
LaGuardia	528	3,548	113,970	69,296	230,001.5	44,674	39.2%
Law School	43	78	2,253	1,467	5,584.0	786	34.9%
Lehman	1,155	2,738	46,743	40,803	128,822.0	5,940	12.7%
NYCCT	746	2,941	74,519	66,299	215,848.5	8,220	11.0%
Queens	1,649	4,287	115,134	70,548	215,248.0	44,586	38.7%
Queensborough	523	2,891	66,116	64,822	199,521.0	1,294	2.0%
Staten Island	992	2,481	70,456	51,740	167,450.0	18,716	26.6%
York	705	1,570	43,566	31,552	89,212.0	12,014	27.6%

College Course Type Instruction Mode Pathways Course Title Section

We're building a new interface to provide

14

- More user-friendly web-based access
 - Nothing to install
 - Nothing to connect to (behind the scenes)
 - Increased sharing
- Expanded functionality
 - Greater flexibility creating ad-hoc queries
 - Scheduled reports
 - Better visualization options
- *Some time in the new year...*

Appendix

15

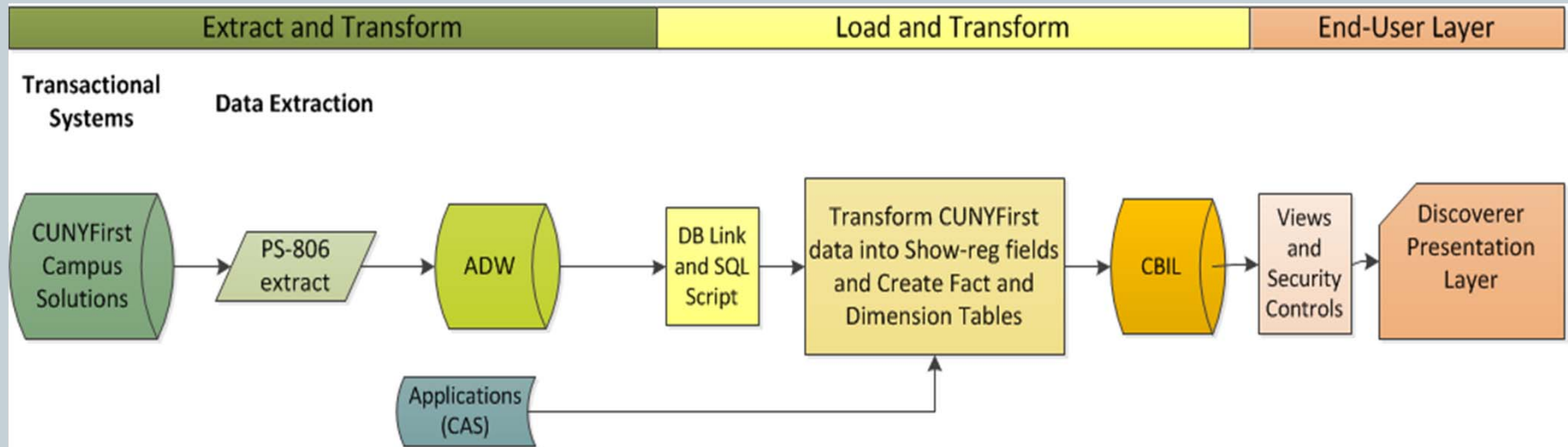
Overview of CUNY Reporting Resources

16

Data Sources	Timelines	Available data	Level of Transformation	Platforms/ Tools for Access
CUNYfirst Reporting Instance	Daily (1-day lag for Reporting Instance)	All HCM, CS, and Finance data are available.	Low: Effective dating, predefined joins, and canned queries	PS Query
I-806/I-856/ADW	Daily	138 CF tables, Limited set of HCM and CS data	None	SQL and Crystal Enterprise
I-805 extract	Daily	Enrollment and testing data	Low	SPSS, Crystal Reports, APEX, and OBIEE
I-184a extract	On demand	Show-Registration, Performance, and Graduation data	Moderate: Effective dating and 19 computed fields	SPSS
CBIL	Daily (1 ½-day lag)	Five semesters of admission and enrollment data; Faculty Workload	Moderate: Computed fields similar to those in IRDB History Facts	Oracle Discoverer
IRDB	Term-based census data	1990 to present	High: Optimized for reporting trends and outcomes	Oracle Discoverer
Future reporting resources	<i>Daily</i>	<i>In development</i>		Oracle Data Integrator, OBIEE

CBIL Data Flows

17



CUNYfirst Data Distribution

18

